

# Weather Monitoring System

## Environmental Monitoring



The SMC Weather Monitoring System provides meteorological data displayed in real time in an Easy to read graphical interface for Industrial Weather Monitoring and Fixed Helidecks.

### General

The SMC Weather Monitoring System, WMS, is a PC based system for displaying and processing of weather data. The Weather Monitoring System is typically used in applications where local collected weather data is to be processed, logged and displayed in an easy to read graphical interface as onboard Vessels, in harbors, Power and Industrial plants, Wind Farms and Fixed offshore platform with Helidecks. The system does meet the CAP437 for Fixed helideck operations.

### System Data

All WMS data is stored into the system log file. The log data storage time is unlimited and the data can be accessed from any location using the web client. Data can be exported for analysis in third party software.

### Interface

The user displays are viewed in a web browser format enabling access from multiple platforms as PC's, Macbooks, Tablets and smartphones across the network. The screen arrangement will automatically adjust to the resolution of the device.

### Instrument integration

Meteorological instruments from almost any manufacturer can be integrated to the system to meet client specifications.

Each Instrument that is interfaced to the SMC system is managed as a unique module that can be added or removed to different display systems that can then be selected for specific user or operational need.

### Key Features

- CAP437, for fixed platforms
- Accessible over LAN/WAN as standard
- Multiple external outputs
- Unlimited logging
- Security Roles

### External systems

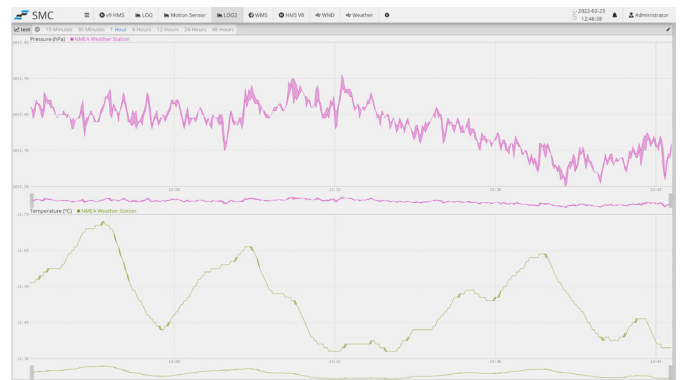
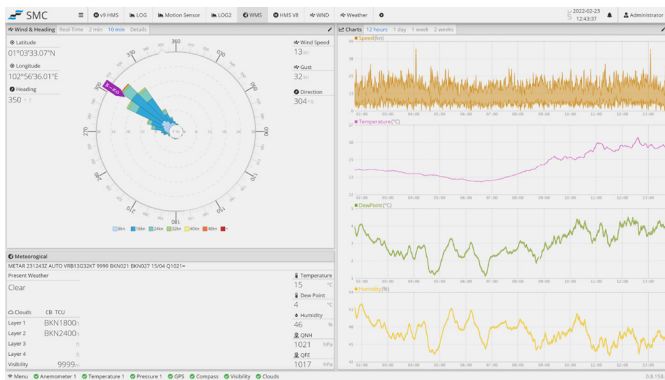
The Weather Monitoring System has a set of external communication available with linking offshore weather and planning services. The SMC WMS system can be configured to send data to other on-board systems with data from the weather instruments over for example SNMP, Modbus TCP/RTU and ASCII. Voltage-Free Contacts are available for alarm outputs using an optional relay output.

### Investment Cost

The SMC system is a single cost purchase where all user rights are controlled by the purchasing client's IT team. There is no additional cost for network client access or system reports in the SMC system which helps to reduce the total investment over the system lifetime.

### About SMC

SMC is an ISO9001:2015 quality management certified company, manufacturing motion sensors and system integration software packages, such as Helideck Monitoring and Motion Monitoring systems, for the global marine industry.



# Specification

## Computer Requirements

- Processor: Passmark benchmark score 4000 or higher recommended, 2500 minimum
- Display: 1920x1080 or 1280x1024 pixels
- OS: Windows 7 SP1, 8, 8.1, 10, 11, Server 2012, 2016, 2019
- Disk Drive: 500 GB SSD recommended
- RAM: 8 GB or more recommended, 2 GB minimum

## External Output

SNMP, Voltage-Free Contacts, Helimet, Serial, Modbus TCP/RTU

## Security Roles

Administrator, Operators, Technicians, Limited

## Logging

Unlimited storage for all interfaced parameters, approx. 30 GB of data per year  
Built in Backup features

## Interface

- |                          |                                |
|--------------------------|--------------------------------|
| Anemometer               | Visibility and Present Weather |
| Barometric Pressure      | Lightning                      |
| Temperature and Humidity | GPS                            |
| Ceilmeter                | Compass                        |

## Interface Optional

- |                                     |                       |
|-------------------------------------|-----------------------|
| Wave Measurements and Tide          | Sea Water Temperature |
| Water Current and Current Direction | Salinity              |
| Solar Radiation                     | Water Depth           |

## Support

Free Technical remote support

